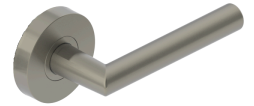




PRODUCT SPECIFICATIONS
For more information visit www.hagerco.com

2317 - Single Dummy

Applications
Multi-Family



PRODUCT SPECIFICATIONS

Door Thickness:
1-3/8" - 1-3/4" (35 mm - 45 mm)

Exposed Trim:
Lever is zinc based
Rose is stainless steel

Features:
No exposed mounting screws
Non-handed (except Johnston and Warren levers)

Finishes:
US10B, US15, US26 and US26D
Finishes other than US26D and US15 will be subject to extended
lead times, contact customer service for availability

Functions:
Single Dummy

Lever Options:
Charles, Louis, Johnston, Joshua and Warren

Optional Finish:
Split finish available

Rose Diameter:
2-1/2" (63 mm)

Warranty:
5-year